



# The Next Evolution in Data Capture

IMAGERS DELIVER VISIBILITY, QUALITY AND AGILITY TO SUPPLY CHAINS

From raw material to finished goods, the supply chain industry is realizing the power of imagers' real-time visibility. Instant data about assets, goods and processes can boost quality, accelerate operations, and reduce costs.

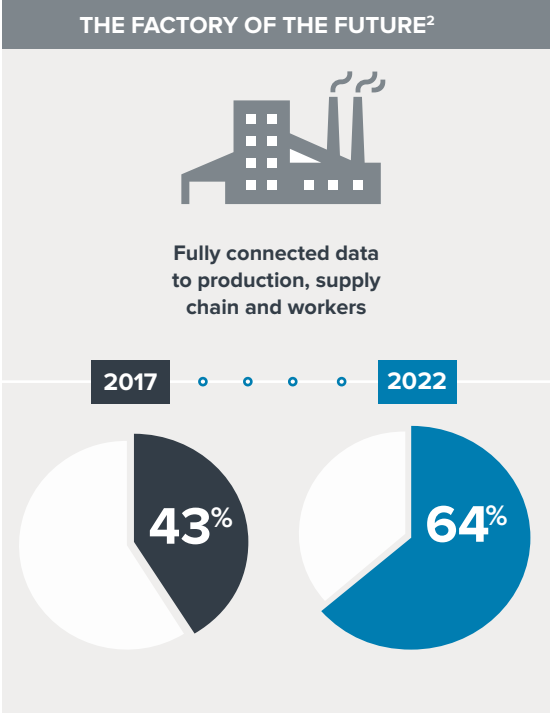
By digitizing the physical, manufacturers can more precisely stock inventory, course correct issues before they impact quality and rapidly adjust to market demand. In fact, one study found that for every \$1 spent on such technology, \$6 were gained in revenue, \$16 in savings and \$3 in profits<sup>1</sup>. It's little surprise then that 64 percent of firms expect to implement data connectivity via 2D barcode technology, RFID, wearables and voice solutions<sup>2</sup>.

The same is true of warehouses. Executives plan to expand the use of 2D barcode scanning by 67 percent over the next five years<sup>3</sup>. That expansion is driven by the increasing demand for speed, accuracy and automation in the face of spiraling online orders, the variety of supply chain goods, and more stringent mandates.

Little wonder then that 2D imager purchases now comprise 60 percent of the handheld market compared to 20 percent market share of laser scanners<sup>4</sup>.

**DATA CONNECTIVITY PAYS**

**\$1** spent = **\$6** in revenue  
 **\$16** in savings  
 **\$3** in profits<sup>1</sup>



## 2D IMAGERS MAKE FOR A STRONGER CHAIN OF EVENTS

In this global economy, overseeing the production and distribution of inventory can be complex. That's why more enterprises are relying on 2D imagers for immediate, end-to-end visibility. With 2D barcoding, critical inventory and asset data is automatically and accurately captured, bypassing slow and error-prone manual data entry.



### REAL-TIME TRACKING AND TRACING

A 2D barcode offers critical insight that can quickly determine whether an item should be utilized or quarantined. Tools in a storeroom, materials for a production line, inventory in a warehouse or trailers in a storage yard – all can be located instantly with 2D barcodes for faster, smarter decision-making.



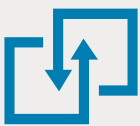
### SMOOTHER WORK IN PROCESS

Adding 2D technology to each gate enables executives to immediately identify and remedy issues, while monitoring velocity and productivity levels at batch levels.



### NIMBLE LINE CHANGES

Demand dictates greater variety. With 2D technology, factories can accelerate their pace. Line workers can scan the 2D barcodes to gauge customer orders, current output, and raw material needed and in stock.



### AUTOMATIC DATA SHARING

The Global Data Synchronization Network (GDSN) enables trading partners to instantly share business data. Suppliers with 2D technology can read GDSN barcodes and automatically update and exchange actionable data, such as inventory tracking, order picking and fleet routes.



### EXPEDITED PICKING, PACKING AND REPLENISHMENT

Suppliers using 2D technology can anticipate demand to replenish merchandise faster, forgo the sluggish errors of pen and paper, and speed up the handling of inbound and outbound inventory by knowing precisely where any pallet, case or SKU is located at any given time.



### ACCURATE SHIPPING, RECEIVING AND CROSS-DOCKING

Equipping workers with 2D technology enables them to preempt the need for trailers, accurately sort and track pallets and confirm that the proper inventory is loaded. Proof of delivery and condition are made easier with the 2D imagers' ability to capture images, signatures and documents.

## ZEBRA'S 3600 SERIES: A CRUCIAL FACTOR IN NEXT-GENERATION SUPPLY CHAINS

Deeper visibility. Maximum speed. Minimum effort. The unstoppable 3600 Series pushes efficiency and productivity to unheard of levels. Ultra-rugged, intelligent and reliable, this line was built to thrive in the most challenging industrial environments. With it, manufacturers and suppliers can do more than prepare for the future; **they can master it.**



### THE ULTIMATE IN EFFICIENCY



#### First-time Capture of Any Barcode in Any Condition

Zebra's exclusive PRZM intelligent imaging reads even the most problematic DPM, 1D, 2D, electronic and printed barcodes the first time, every time.



#### Industry-leading Range and Aim

Now, workers can stay in place and still capture barcodes as far as 70 feet away – 50% farther than the competition – and as close as 3 inches\*. The precision of our aiming technology makes it easy to pick and scan just the code needed.

\*Working range varies by model.



#### Simultaneous Data Capture

Many labels in a manufacturing plant and warehouse contain multiple barcodes. With a single trigger pull, workers can capture up to 20 at one time.

### UNSTOPPABLE UPTIME



#### Ultra-rugged Design

Featuring the industry's highest drop and tumble specifications, these imagers are also dustproof, spray-proof, waterproof and built to withstand extreme heat, cold and humidity for use virtually anywhere. Even the cradle is rugged.



#### Anywhere Mobility without Any Wi-Fi™ Disruption

Zebra's Wi-Fi Friendly mode ensures the Bluetooth® frequency of our cordless imagers won't interfere with Wi-Fi infrastructure.



#### Powered for up to 70,000 Scans

With more than 50 percent more battery capacity than competitive models, PowerPrecision+ batteries ensure work won't be interrupted mid-shift.

### SIMPLIFIED MANAGEMENT



#### 123Scan and Remote Management

Zebra's 123Scan is the industry's most intuitive tool, making deployments fast and management costs low.



#### Easy Remote Management

Scanner Management Service (SMS) is a set-it-and-forget-it, remote solution that dramatically reduces effort and total cost of ownership.




#### Scanning and Battery Metrics

Anticipate trouble to avoid it. Easily spot and replace aging batteries before they disrupt work, with Zebra's exclusive visionary visibility into scanning and battery performance.

## REIMAGINING TECHNOLOGY REFRESHES

With more than 5 billion barcodes are scanned each day<sup>5</sup>, supply chains would be wise to consider migrating to 2D technology. Not only can industries store up to 100 times the amount of critical data held by 1D barcode<sup>6</sup>, they can turn that real-time insight into immediate and decisive action. The 3600 Series takes visibility to the next level by offering unmatched performance, ruggedness and intelligence. With it, suppliers gain the flexibility of having 1D technology, along with 2D advantages to elevate quality and expedite operational speed.

<b>1-DIMENSIONAL CODES</b> Encode data horizontally only.		<b>2-DIMENSIONAL CODES</b> Encode both vertically and horizontally, with much greater storage capacity.
✓	Reads 1D printed barcodes on paper	✓
✗	Reads 1D and 2D electronic barcodes from mobile device screens	✓
✗	Enables true omni-directional scanning	✓
✗	Reads multiple barcodes with a single trigger pull	✓
✗	Supports Optical Character Recognition (OCR)	✓
✗	Captures and transfers images	✓
✗	Reads Direct Part Marks (DPM)	✓
✗	Excellent performance on poorly printed, damaged or shrink-wrapped barcodes	✓

Sources:

1. American Society for Quality ISO Update
2. 2017 Manufacturing Vision Study, Zebra Technologies, 2017
3. Building the Smarter Warehouse: Warehousing 2020, Zebra Technologies, 2017
4. VDC Research, The Global Market for Handheld Scanners, 2015
5. [http://www.gs1org/docs/media\\_centre/g1\\_pr\\_030413\\_40th\\_anniversary.pdf](http://www.gs1org/docs/media_centre/g1_pr_030413_40th_anniversary.pdf)
6. <http://www.gs1.org/about>

For more information, visit [www.zebra.com/3600](http://www.zebra.com/3600)